

Barneveld

Comprehensive Outdoor Recreation Plan
&

Birch Lake Park Master Plan

Public Open House

October 6, 2021



Public Open House Meeting Agenda

- **Welcome & Introductions**
 - Mike Peterson - Village Trustee
 - Becky Binz, AICP - Park Planner (MSA)
 - Raine Gardner, PE – Park Engineer/Team Leader (MSA)
- **Meeting Objectives**
 - Provide information about the project
 - Review preliminary survey results
 - Review draft conceptual plans
 - Gather your feedback

What is a Comprehensive Outdoor Recreation Plan (CORP)?

- A **Comprehensive Outdoor Recreation Plan (CORP)** is a 5-year+ plan used to guide annual budget and capital improvement projects by communities related to parkland acquisition and development; bicycle route and trail development; and other recreational improvements.
- A requirement for receiving state or federal park and recreation grants.

General Plan Scope

- Plan Contents:
 1. Feedback from community survey, public meeting, Village Board meetings, etc.
 2. Data analysis (e.g. quantitative, qualitative, geographic)
 3. Goals, Objectives, and Policy Statements
 4. Concepts for Birch Lake Park and Memorial Park
 5. Recommendations/Funding



Barneveld Comprehensive Outdoor Recreation Plan Survey

Respondent Profile

These questions will help us understand how well the survey responses represent the overall population of the community.

1. What is your age?

- ☐ Under 18 ☐ 18-24 ☐ 25-34 ☐ 35-44 ☐ 45-54
☐ 55-64 ☐ 65 or older

2. Do you have any children living in your home that are under the age of 18?

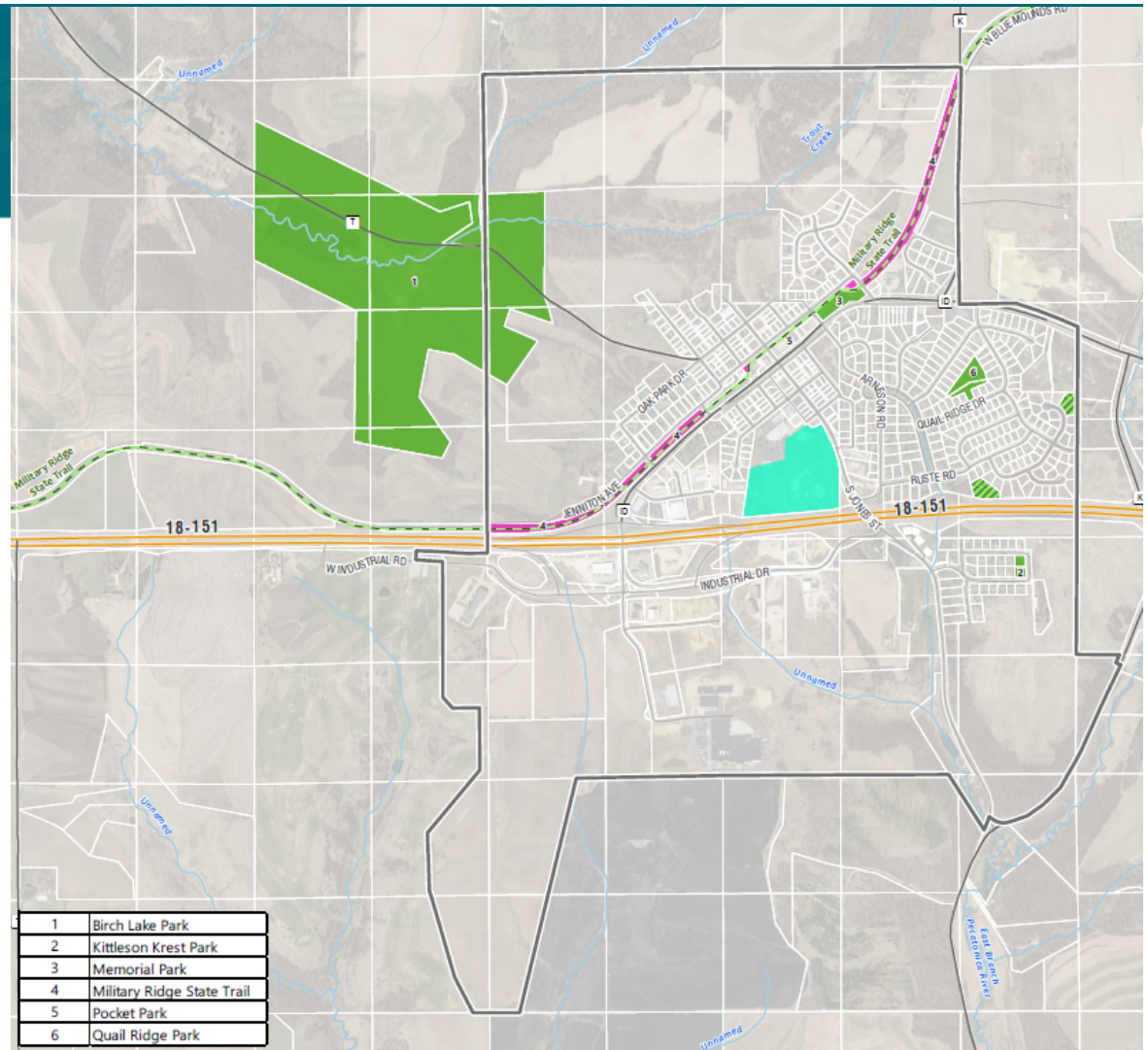
- ☐ Yes ☐ No

Planning Process Schedule

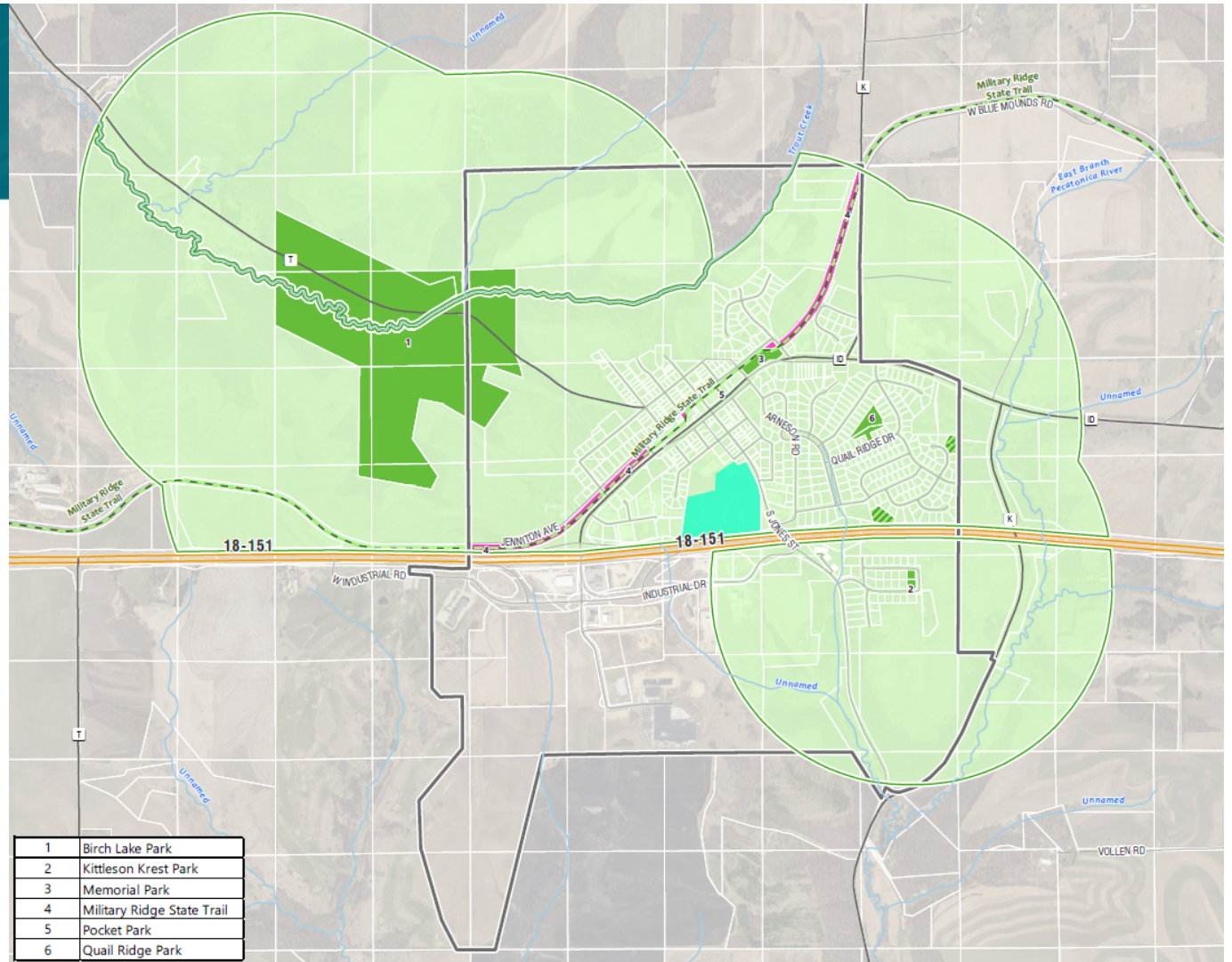
Month	Action
July	<div>✓</div> Project Kickoff, Data Collection, & Survey Development <ul style="list-style-type: none"> • Committee Meeting #1, July 14th
August - September	<div>✓</div> Public Engagement/Qualitative Analysis, Quantitative & Geographic Analysis Draft Master Plan for Birch Lake Park & Concept for Memorial Park <ul style="list-style-type: none"> • Parks Survey (July 22nd– August 20th) • Public Open House (You are here!)
October	Preliminary Recommendation
November	Develop Draft Plan and Final Master Plan for Birch Lake Park & Concept for Memorial Park
December	Plan Adoption <ul style="list-style-type: none"> • Committee Meeting #2 • Village Board

Existing Village Facilities

- 157 total acres of parkland
- Currently providing 14 acres of developed parkland per 1,000 residents



Park Service

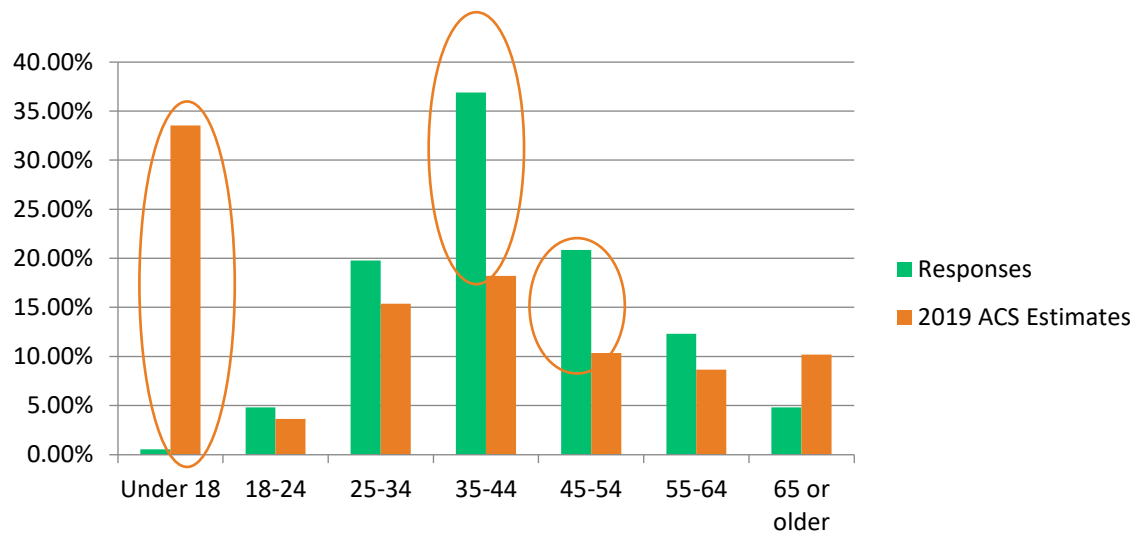


CORP Survey

Preliminary highlights from the online survey

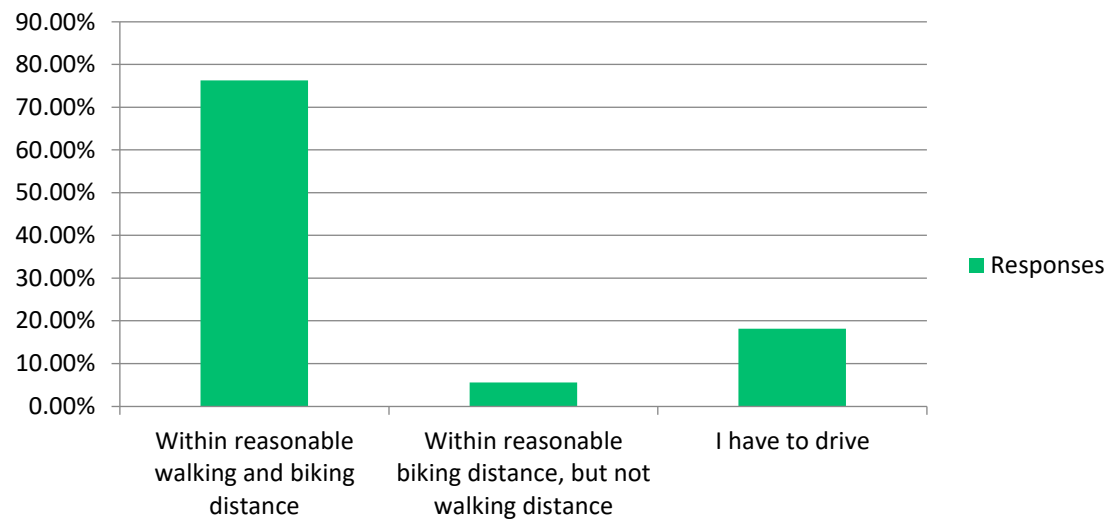
Survey Response Overview

- 245 respondents



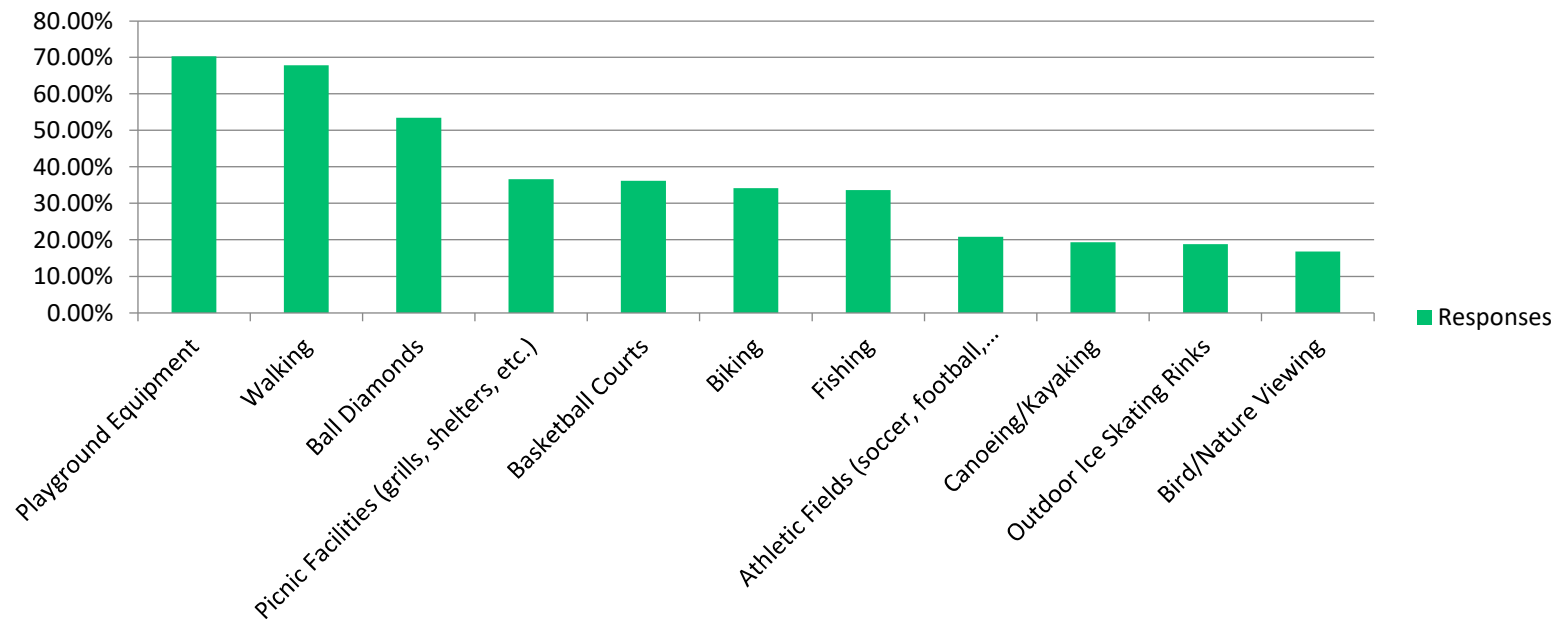
Question 8 – Resident Responses

How close is the nearest park or trail to your home?



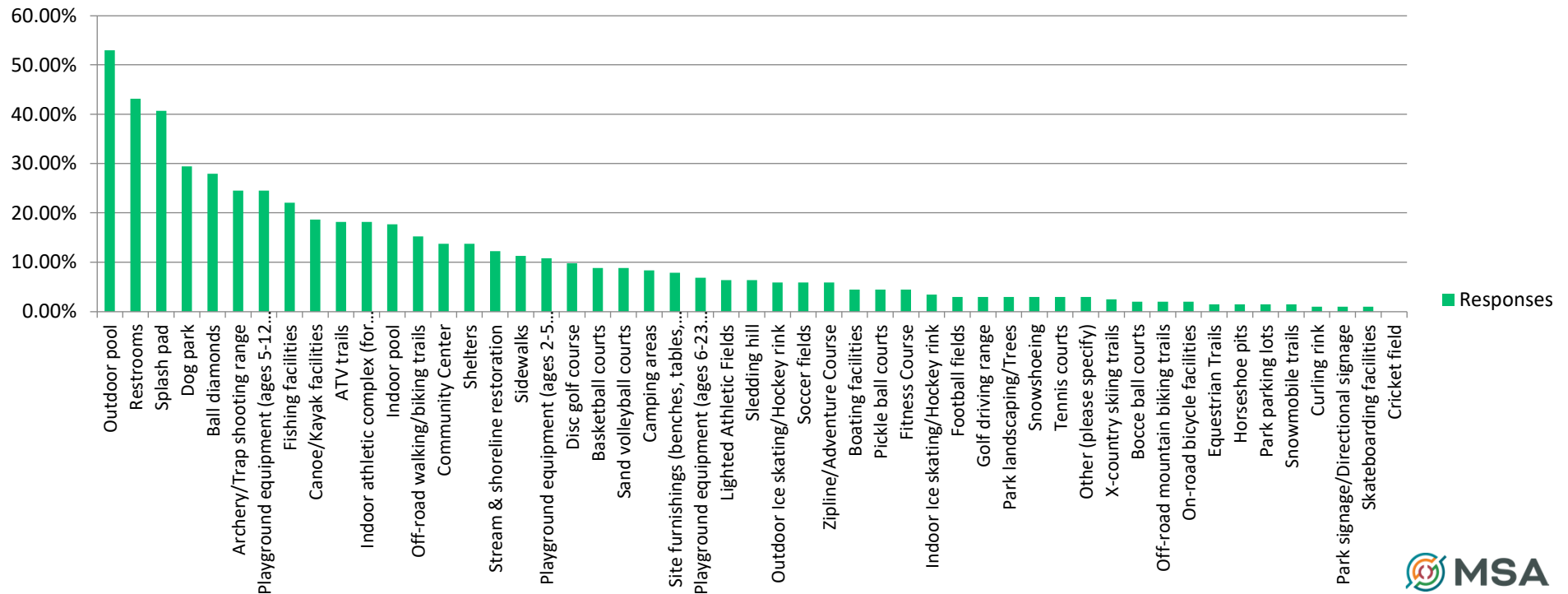
Question 11

When visiting Village parks, which activities or facilities do you or members of your household most commonly participate in or use? Check all that apply.



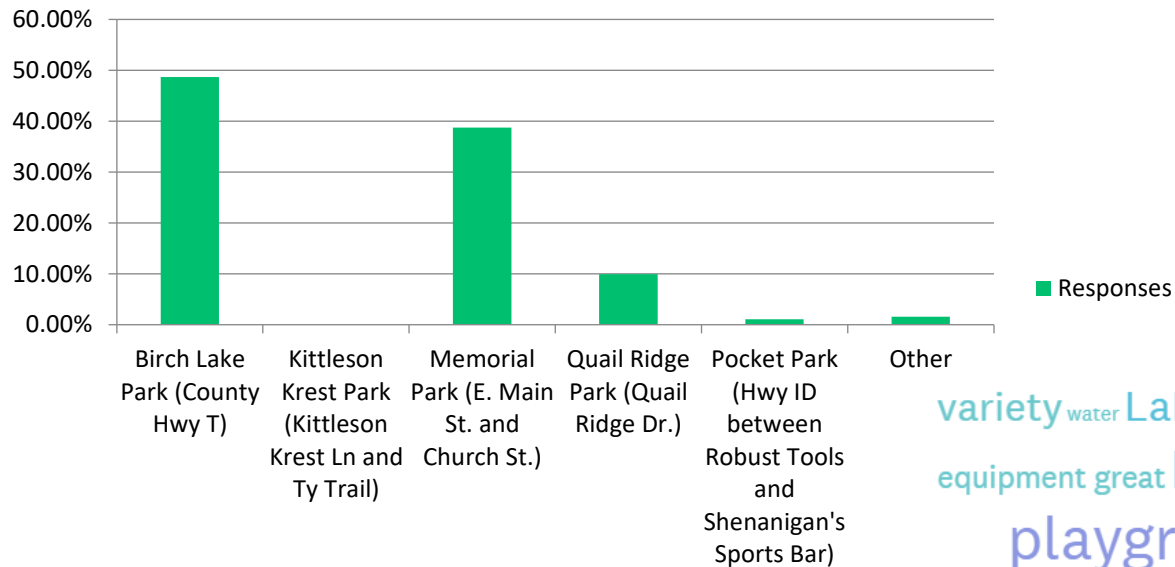
Question 10

Which of the following amenities would you like to be added either by public or private entities? Mark up to 6 preferences.



Question 11

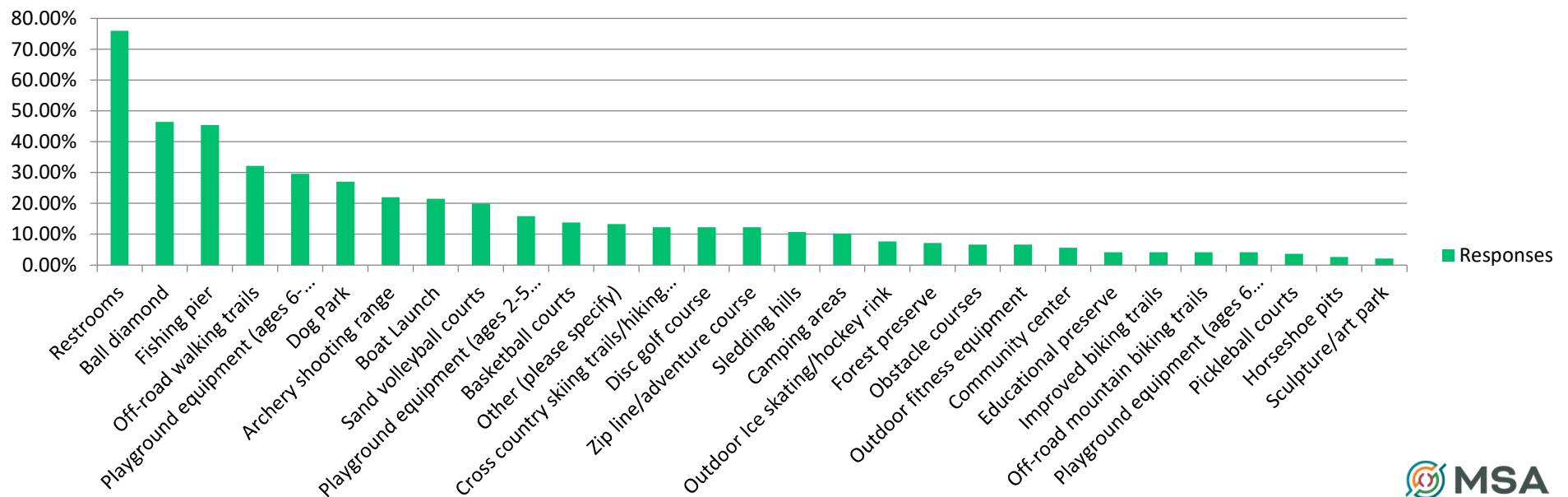
What is your favorite park to visit in the Village of Barneveld?

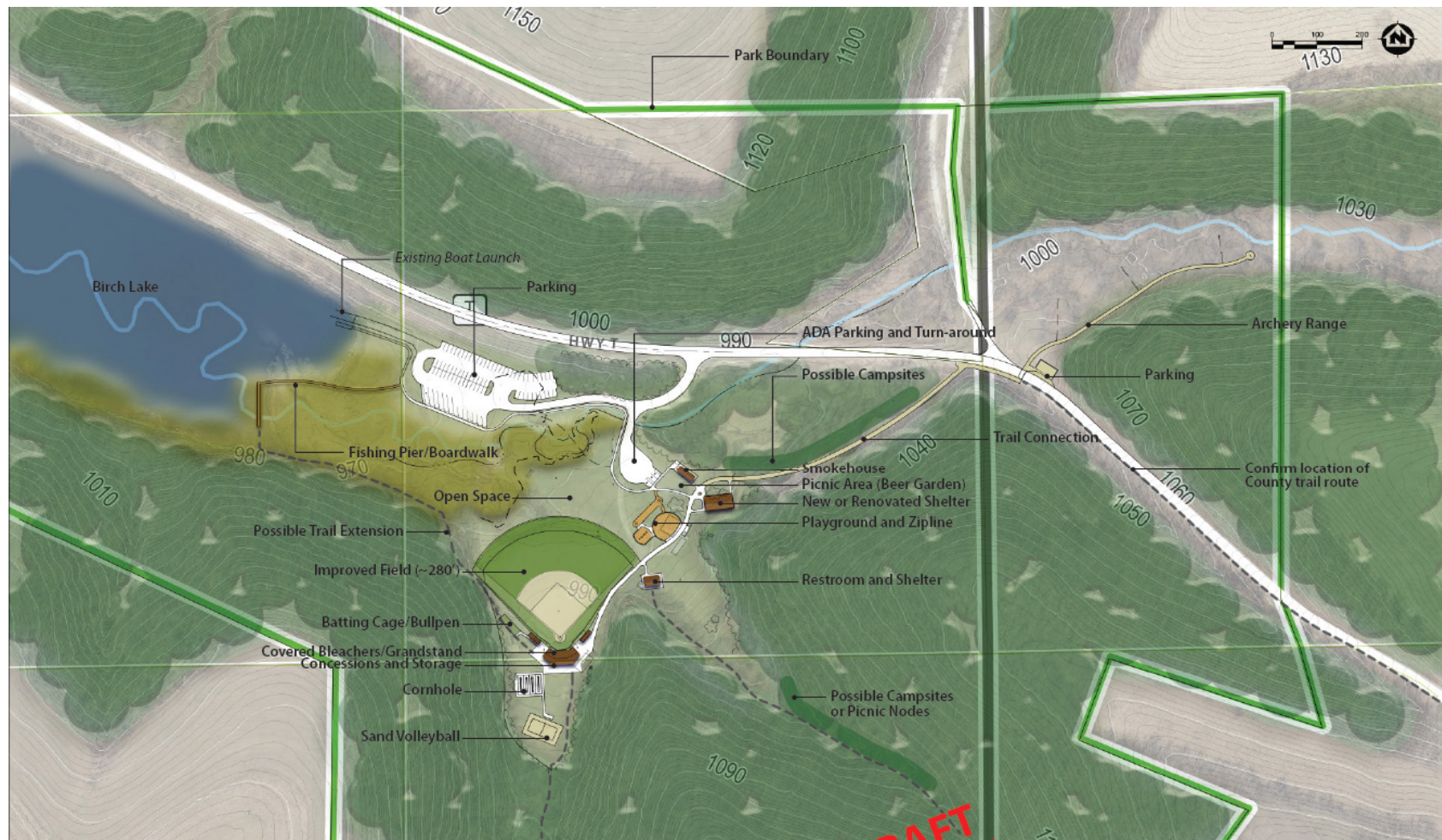


variety water Lake Proximity ball Easy access playground
 equipment great Location Dog equipment quiet
 playground equipment setting
 Close to home home kids area play walk Ball field
 fishing updated shelter bike scenery Nature bike trail

Question 13

A Master Plan is being developed for Birch Lake Park on CTH T (see location below). The Village now owns Birch Lake Park, which gives the Village the ability to treat the property as a blank slate for the first time. What amenities would you like to have



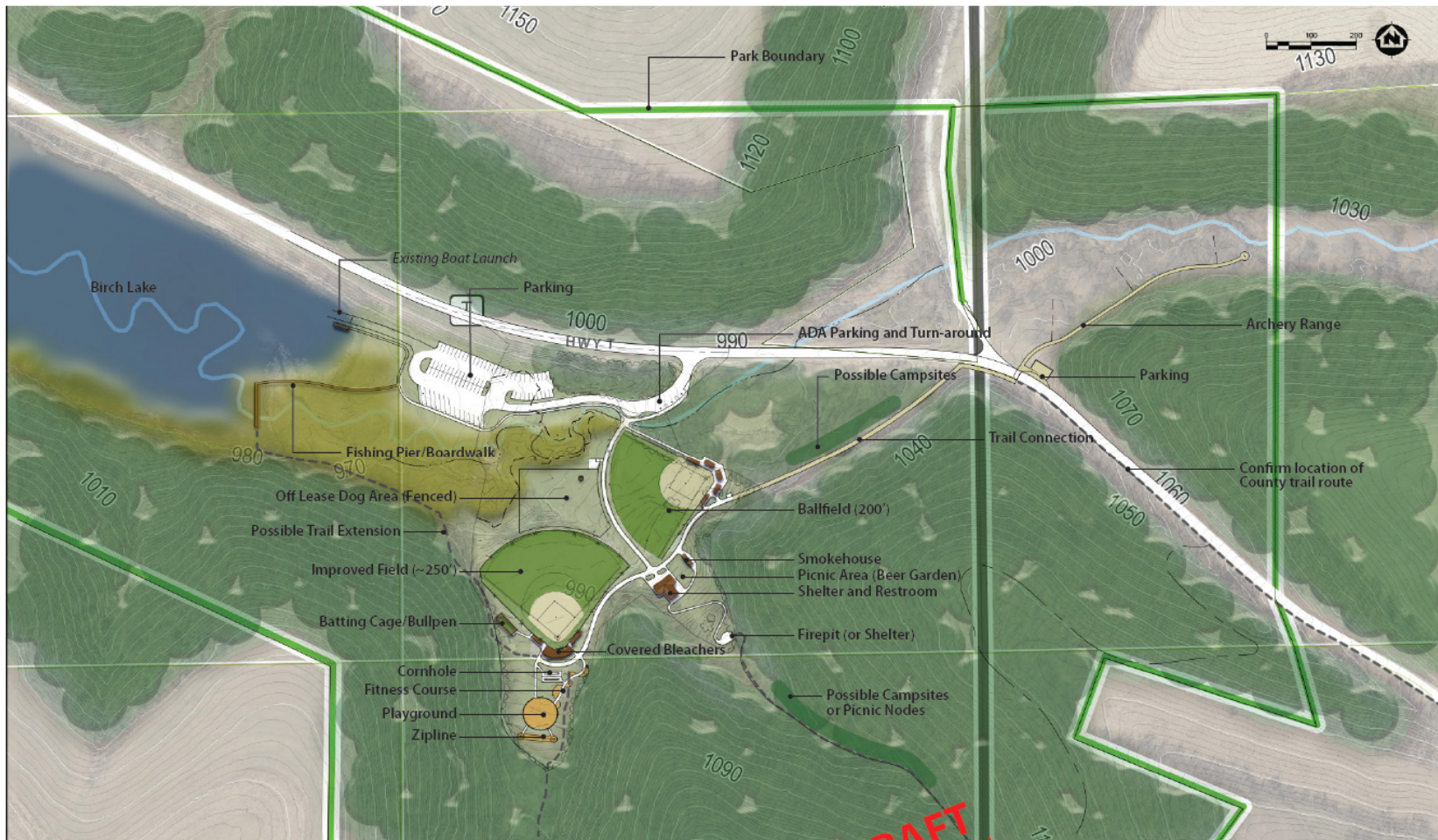


Birch Lake Park Master Plan Concept A

Barneveld, Wisconsin
October 6, 2021

DRAFT
FOR DISCUSSION





Birch Lake Park Master Plan Concept B

Barneveld, Wisconsin
October 6, 2021

DRAFT
FOR DISCUSSION





Memorial Park Master Plan

Option A

Barneveld, Wisconsin
October 6, 2021

DRAFT
FOR DISCUSSION





Memorial Park Master Plan Option B

Barneveld, Wisconsin
October 6, 2021

DRAFT
FOR DISCUSSION



Tonight's Activities

1. Overall Park System Map

Part 1:

- Place numbered dots on the map regarding desired improvements to **existing parks** and locations desired for **new parks**. Write the number of the dot and your comment on the sheet provided.

Part 2:

- Place numbered dots on the map regarding desired improvements to **existing bicycle and pedestrian facilities** and locations desired for **new bicycle and pedestrian routes**. Write the number of the dot and your comment on the sheet provided.

2. Birch Lake Park Master Plan

- Place numbered dots on the map to provide feedback on the two draft master plans for Birch Lake Park.

3. Memorial Park Concept

- Place numbered dots on the map to provide feedback on the two draft concepts for Memorial Park.

4. Barneveld Green

- Place your 5 coins in the bucket(s) where you would prioritize funding for parks.

5. Sticky Wall – Give us your big ideas!

- Write your big idea, your vision, or changes you would like to see for Parks and Recreation in Barneveld.

Stay Connected, Stay Involved



<https://barneveldwi.com/>

The background is a solid teal color. On the left side, there is a vertical red bar. Overlaid on the teal background are several concentric, semi-circular lines that create a ripple effect, centered towards the bottom right.

Thank you for your time and input!

Questions?